

---

#### Sikkerhetssensor for Rada Outlook / Rada Pulse.

Art.nr.: RO280300.

Elektrisitet: 12V til 24V AC.  
12V til 30V DC.

Klasse: IP54 godkjent.

CE godkjent

Størrelse: 131x61x55mm (LxHxD)

Sikkerhetssensoren ansluttes Rada Pulse/Rada Outlook styresentral for å redusere skoldingsfaren som oppstår ved automatisk legionellaspøying.

*Spør oss om koblingsskjema for tilkobling.*

OBS! Sensoren kan detektere bevegelse fra vann som spruter fra dusjen og treffer gulvet, samt vann som renner på gulvoverflaten og dermed stanse pågående legionellaspøying.

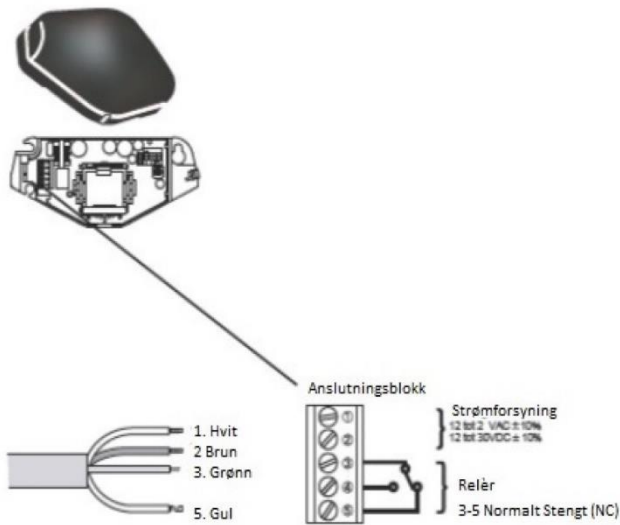
Den bør derfor plasseres utenfor dusj sone, men slik at den detekterer folk som entrer dusj sone.

---

Vestnor Teknisk AS, Nyeveien 49 B,  
4370 Egersund  
Tlf: 51498060, Epost:  
[post@vestnorteknikk.no](mailto:post@vestnorteknikk.no)  
Internett: [www.vestnorteknikk.no](http://www.vestnorteknikk.no)

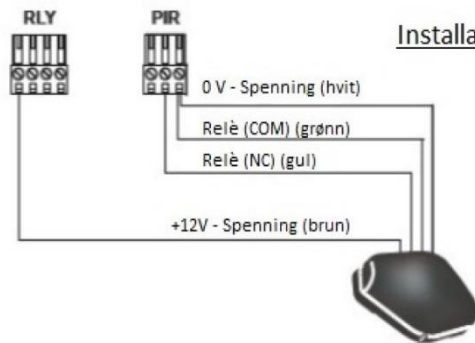


På rada sikkerhetssensoren:

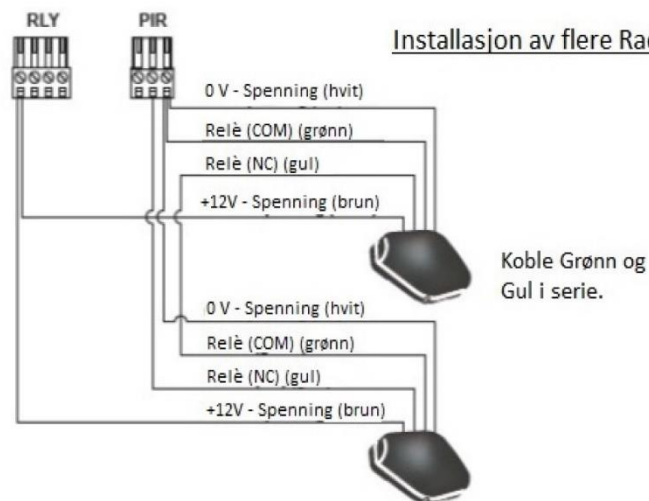


På sensorboksen

### Installasjon av en Rada sikkerhetssensor



### Installasjon av flere Rada sikkerhetssensorer



En ekstern 12v strømforsyning (ikke inkludert) kreves når du bruker mer enn 2stk rada sikkerhetssensorer



OM-105C / 106C



ENGLISH



Manufacturer's statement

Read this operation manual carefully before use to ensure proper operation of this product. Failure to read this operation manual may cause improper operation and may result in serious injury or death of a person. The meanings of the symbols are as follows.

WARNING Disregard of the warning symbol can cause improper operation which may cause death or serious injury.

CAUTION Disregard of the caution symbol can cause improper operation which may cause injury of a person or damage the object.

NOTE Special attention is required to the section of this symbol.

- NOTE 1. This sensor is a non-contact switch intended for header mount/coiling mount of an automatic door. Do not use for any other applications. 2. When setting the sensor's detection area, make sure there is no traffic around the installation site. 3. Before turning the power on, check the wiring to prevent damage or malfunction of equipments that are connected to the sensor. 4. Only use the sensor as specified in the operation manual provided. 5. Be sure to install the sensor in accordance with the local laws and standards of the country in which the sensor is installed. 6. Before leaving the job site make sure that the sensor is operating properly and instruct the building owner/operator on proper operation of the door and the sensor. 7. The sensor setting can only be changed by an installer or service engineer. When changed, register the changed setting and dates in the maintenance logbook accompanying the door.

WARNING Danger of electric shock Do not wash, disassemble, rebuild or repair the sensor, otherwise it may cause electric shock or breakdown of the equipment.

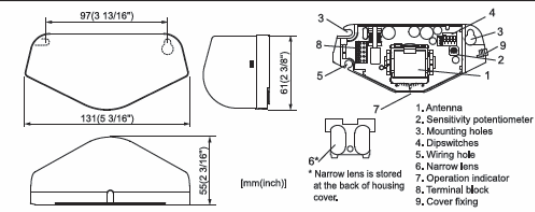
NOTE The following conditions are not suitable for the sensor installation. - Vibrating header or mounting surface. - Waterdrops or snow on the sensor. - Moving objects, steel plate, emergency lights or illumination in the detection area or in vicinity.

Specifications

Table with 2 columns: Specification and Value. Includes Model (OM-105C / 106C), Output (Form C relay), Cover color (Silver / Black), Output hold time (0.5 s/2.0 s), Mounting height (2.0 (6'7") to 3.5 m (11'5")), Response time (< 0.3 s), Detection method (Microwave doppler effect), Operating humidity (< 80%), Transmitter frequency (24,125 MHz), Operating temperature (-20°C to +55°C (-4°F to 131°F)), Transmitter radiated power (< 20 dBm), IP rate (IP54), Detection area (See Detection area), Weight (140 g (4.9 oz)), Vertical adjustment (+10° to +70° (Header mount), +20° to +60° (Coiling mount)), Accessories (1 Cable 3 m (9'10"), 1 Operation manual, 2 Mounting screws, 1 Mounting template, 1 Narrow lens\*), Horizontal adjustment (30° to left or right), Power supply (12 to 24 VAC(±10%), 12 to 30 VDC(±10%), < 1.5 W(2 VA(AC))), Power consumption, Minimum speed (5 cm (1 15/16")/s), Operation indicator (Green / Stand-by, Red / Detection, Green blinking / Set-up).

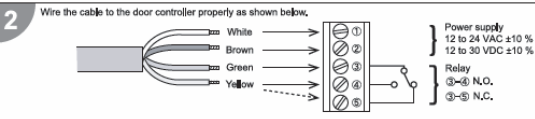
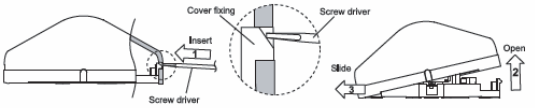
NOTE The specifications herein are subject to change without prior notice due to improvements.

Outer dimensions and part names



Installation

- 1. Place the mounting template at the desired mounting position. 2. Drill 2 mounting holes of ø3.4 mm (ø1/8"). 3. To pass the cable through to the header, drill a wiring hole of ø8 mm (ø5/16"). 4. Remove the mounting template. 5. Remove the housing cover with screw driver as shown below. Attach the sensor to the mounting surface with 2 mounting screws.



WARNING Before starting the procedure, ensure that the power is turned OFF. When passing through the cable to the hole, make sure not to tear the shield, otherwise it may cause electric shock or breakdown of the sensor.

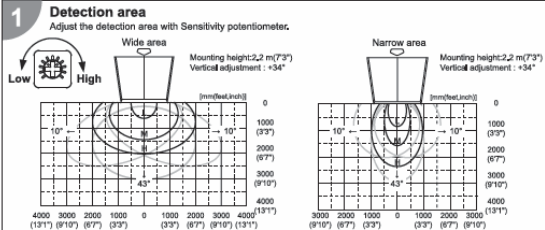
- 3. Plug the connector of the sensor. 2. Supply power to the sensor and the sensor will automatically start the set-up mode with blinking Green. 3. Adjust the detection area and set the Dipswitches. (See Adjustments)

NOTE Make sure to connect the cable correctly to the door controller before turning the power ON. The sensor does not detect objects for 10 s after supplying power.

- 4. Hook the housing cover on the left side of main body to place the housing cover. If wiring is to be exposed, break the knockout.

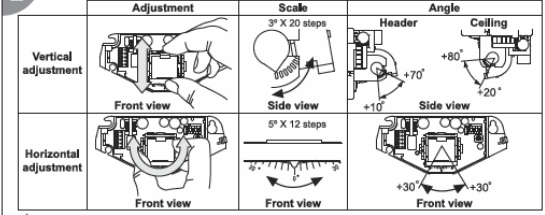
WARNING Do not use the sensor without the housing cover. When using the cable knockout, install the sensor indoors or use the rain-cover (Separately available) otherwise electric shock or breakdown of the sensor may occur.

Adjustments



NOTE When the sensor is mounted at higher than 3.0 m, set the Sensitivity to "H"(High).

Detection area angle adjustment



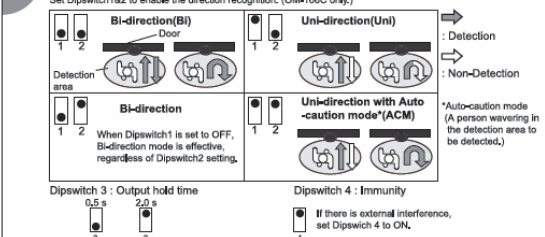
CAUTION Do not touch electric part of the sensor to avoid possible breakdown of the sensor.

Narrow area

To obtain Narrow area, place Narrow lens attached at the back of housing cover. To place Narrow lens, follow step1&2 as shown on the right.



Dipswitches settings



Inform building owner/operator of the following items

WARNING 1. Always keep the housing cover clean. If dirty, wipe the housing cover lightly with a cloth. (Do not use any cleaner or solvent.) 2. Do not wash the sensor with water. 3. Do not disassemble, rebuild or repair the sensor yourself, otherwise electric shock may occur. 4. Always contact your installer or service engineer when changing the settings. 5. Do not paint the housing cover.

NOTE 1. When turning the power ON, always walk-test the detection area to ensure proper operation. 2. Do not place any objects that move or emit light in the detection area. (e.g. Plant, illumination, etc.)

Checking

Table for checking operation. Columns: Sensor status, Power OFF, Set-up (Approx. 10 s), Stand-by, Detection. Rows: Operation indicator (OFF, Green blinking, Green, Red), Output contact (Circuit diagrams for each status).

Troubleshooting

Table for troubleshooting. Columns: Problem, Operation indicator, Possible cause, Possible countermeasures. Rows include: Door does not open when a person enters the detection area, Door opens when no one is in the detection area (Ghosting), Door remains open.

Herby, OPTEx declares that the radio equipment type OM-105C/106C series are in compliance with RED 2014/53/EU. The full text of the EU DoC is available at the following internet address: www.optex.net

Table with Manufacturer and European Subsidiary information. Includes OPTEx CO., LTD. (Japan) and OPTEx Technologies B.V. (The Netherlands).